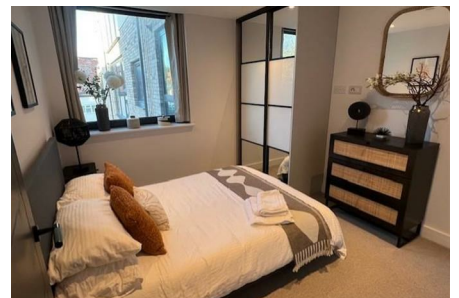
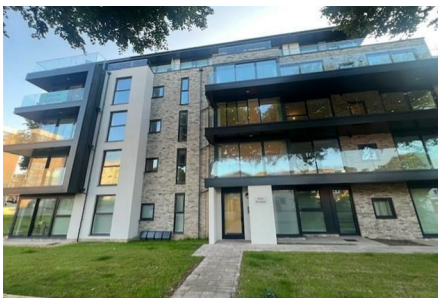


## Wollstonecraft Road, Bournemouth, Dorset BH5 1AE



**£1,350 Per Calendar Month**



### Stunning 1-Bedroom Fully Furnished Apartment

Available immediately, this brand new second-floor one-bedroom apartment at Reef Manor offers modern coastal living in one of Bournemouth's most desirable locations. Step inside this stylish, fully furnished home featuring a bright open-plan living area, a sleek contemporary kitchen with integrated appliances, and a spacious double bedroom with ample storage. The property also includes a luxurious bathroom, high-quality finishes throughout, and secure entry access for peace of mind.

#### Location Highlights:

Reef Manor is ideally situated on Wollstonecraft Road, BH5, just moments from Boscombe Beach and Bournemouth's award-winning seafront. Enjoy a relaxed coastal lifestyle while being within easy reach of local shops, cafés, restaurants, and gyms.

#### Transport & Connectivity:

Excellent transport links make this location perfect for professionals. Pokesdown and Bournemouth train stations are nearby, providing fast connections to London, Southampton, and Poole. Major bus routes and road links (A338) offer quick access around the town and beyond.

# BELVOIR!

Belvoir Bournemouth  
122-124 Castle Lane West, Bournemouth, Dorset, BH9 3JU



Call: 01202 430 108

[belvoir.co.uk](http://belvoir.co.uk)

